



SS172 Sea Torch Lights



Sidus Solutions' SS172 Sea Torch underwater light offers the perfect illumination solution for a vast number of applications. Moreover, with a depth rating of 3,000 meters, the SS172 is distinctively suited for lighting applications on remotely operated vehicles, wellhead inspection and other deep diving operations.

Built in adaptability of the Sea Torch allows the user to illuminate defined narrow spots or broad area views via internal interchangeable reflectors. The SS172 also provides component options including housing materials, bulbs and connectors further enhancing its adaptability to specific environments and requirements.

At Sidus, we strive to keep it simple for our customers. Keeping this in mind, the SS172 is designed for easy reconfiguration and is entirely field serviceable. But don't let the simplicity fool you, this industrial light is housed in a hard-anodized T6061 aluminum enclosure and capable of withstanding professional abuse.

Sidus Solutions supplies complete turn-key inspection system equipment and services. Ask your representative today about other Sidus Solutions product offerings and services.

Specifications

Dimensions:	Diameter 3.0 in. / 76.2 mm
Length:	4.2 in. / 106.7 mm
Weight:	1.5 pounds / .68 kg (in air) .98 pounds / .44 kg (in water)
Housing:	Hard anodized aluminum
Window:	Pyrex
Connector:	SEM 3PS4 standard
Operating Depth:	10,000 feet / 3,000 meters

Options

Housing:	Electro-polished 316 stainless steel or Titanium
Lamp Output:	75, 100, 150, 250 & 500 watts
Reflectors:	Wide: 50 beam pattern Medium: 17 beam pattern Narrow: 9 beam pattern

Note: Unit size may vary slightly as options are added and modifications are made.
Design and Specifications are subject to change.

P O Box 60767
San Diego, CA 92166
619.275.5533 phone
619.275.5544 fax

P O Box 925006
Houston, TX 77292
281.596.7568 phone
281.596.7578 fax

info@sidus-solutions.com
www.sidus-solutions.com

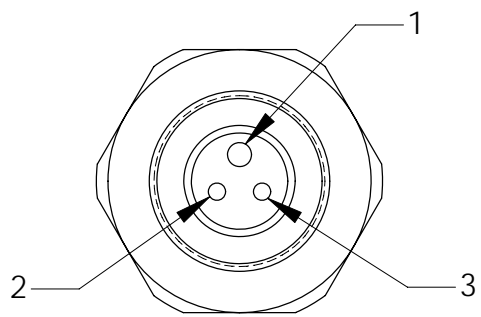
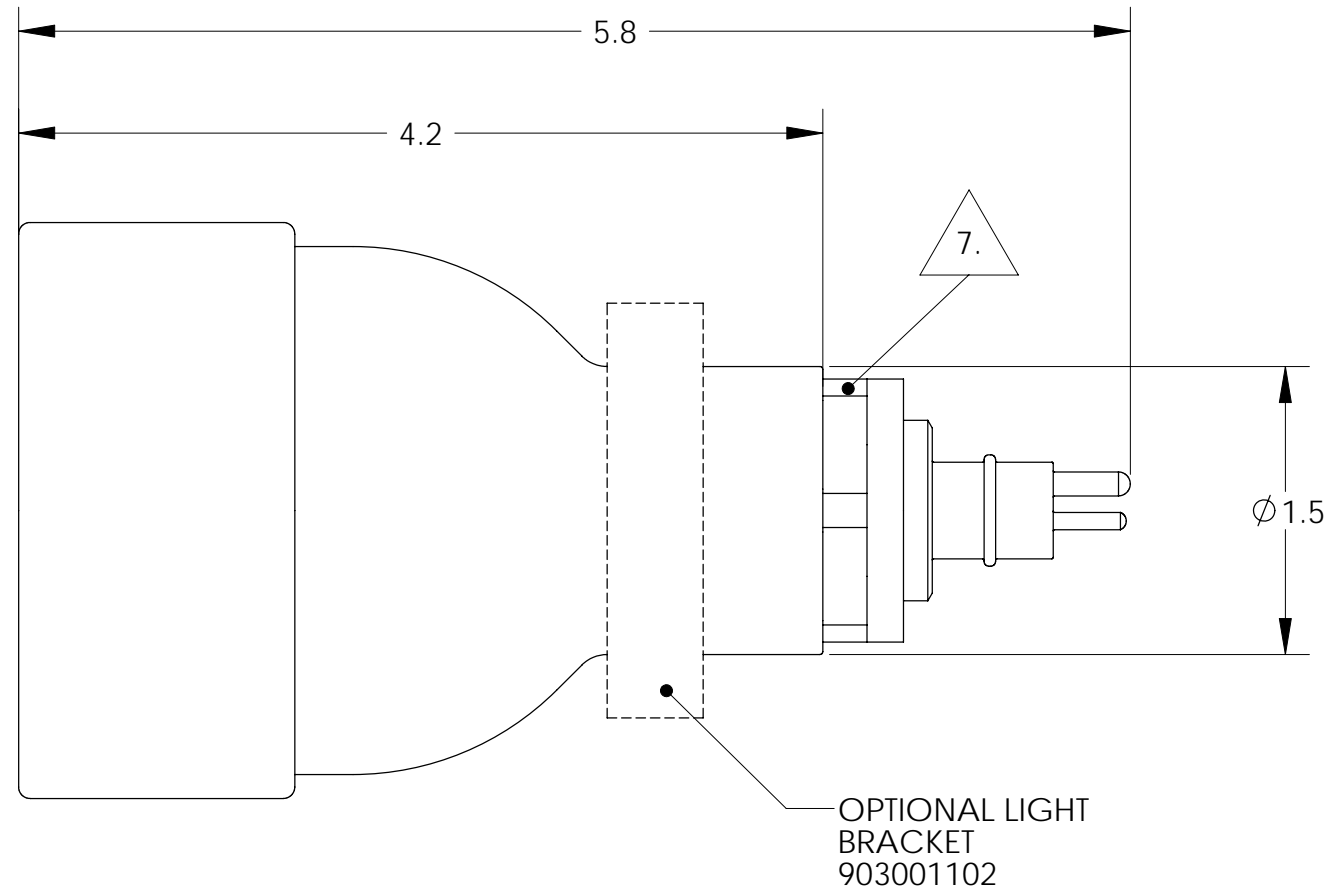
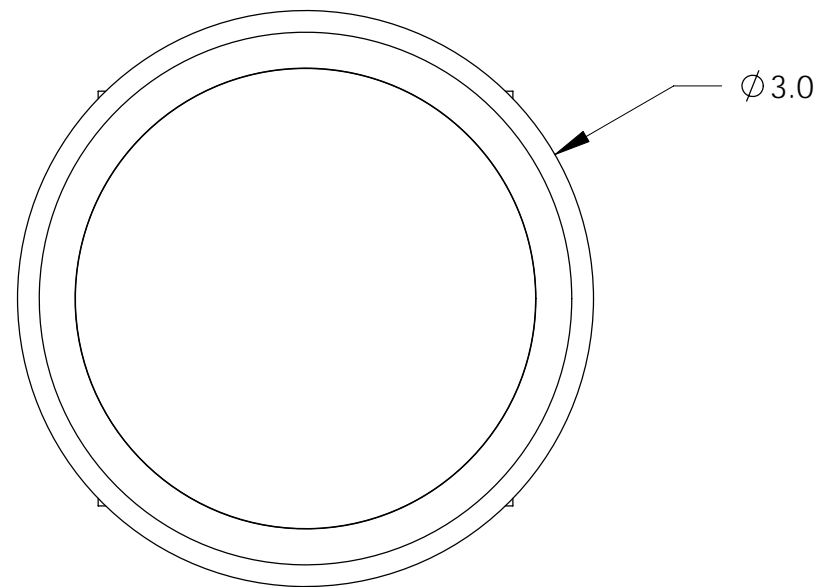
PROPRIETARY AND CONFIDENTIAL

THE INFORMATION CONTAINED IN THIS DRAWING IS THE SOLE PROPERTY OF SIDUS SOLUTIONS INC. ANY REPRODUCTION IN ANY PART OR AS A WHOLE WITHOUT THE WRITTEN PERMISSION OF SIDUS SOLUTIONS INC. IS PROHIBITED.

NOTES: UNLESS OTHERWISE SPECIFIED


1. MATERIAL: 6061-T6 ALUMINUM HARD ANODIZED
 OPTIONS: 6AL-4V TITANIUM
 316L STAINLESS STEEL
2. STANDARD OPERATING DEPTH: 10,000 FEET / 3,000 METERS
3. WEIGHT (ALUMINUM): 1.5lbs (.68 kg) IN AIR
 .98lbs (.44 kg) IN WATER
4. LAMPS OPTIONS: 75W, 100W, 150W, & 250W (STANDARD)
5. REFLECTOR STIMPLING: HEAVY
6. CONNECTOR: SEM3P-4S (SEACON)
7. CONNECTOR MUST BE REMOVED PRIOR TO BRACKET INSTALLATION

REVISIONS			
REV.	DESCRIPTION	DATE	APPROVED



PIN	COLOR	FUNCTION
1	GREEN	GROUND
2	WHITE	NEUTRAL
3	BLACK	L1

DRAWING #:	PROJECT:	DATE	APPROVED
OI_901001301-01	SS-172		
APPROVED, MFG. MAY PROCEED			
MFG. MAY PROCEED, REVISE AS-BUILT, RESUBMIT			
MFG. MAY PROCEED AS NOTED, REVISE, RESUBMIT			
REVISE AND RESUBMIT, DO NOT PROCEED WITH MFG.			
FOR INFORMATION ONLY, COPY			
VOID			

UNLESS OTHERWISE SPECIFIED DIMENSIONS ARE IN INCHES WITH THESE TOLERANCES: DECIMAL ANGLE .XX ± .01 ±1.0° XXX ± .005	APPROVALS	DATE	
	DRAWN A. CARROLL	6/16/03	
	CHECKED		
	ENG APPR.		
	MFG APPR.		
INTERPRET GEOMETRIC TOLERANCING PER: ANSI-Y14.5M	COMMENTS:		250W SEA TORCH LIGHT O/I SIZE B DWG. NO. OI_901001301-01 REV -- SCALE: 1:1 PART FILE: 901001301 SHEET 1 OF 1
MATERIAL REFER TO NOTE 1.	CAD GENERATED DRAWING, DO NOT UPDATE MANUALLY		
FINISH RMS SURFACE FINISH .63			
NEXT ASSY	USED ON		
APPLICATION		DO NOT SCALE DRAWING	